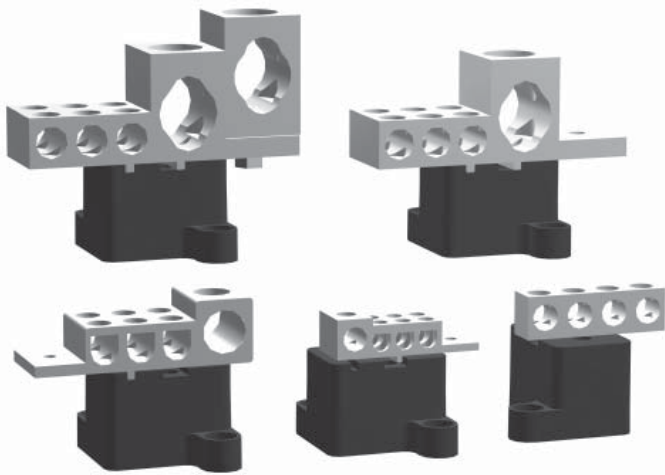


Splitter Blocks



Commercial Enclosures

Application

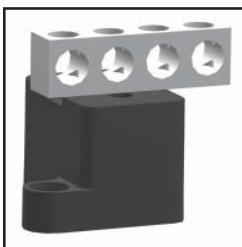
- These blocks are used in Hammond standard splitter troughs and boxes.
- The design includes the main and branch lugs which can use either copper or aluminum conductors.
- All blocks are rated 600 V.

Standards

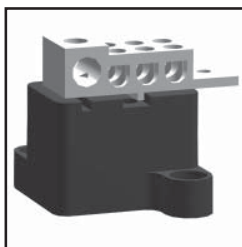
- CSA Certified

Construction

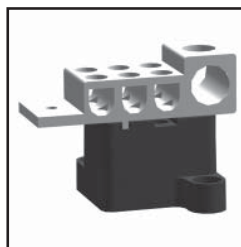
- Cu-Al monopiece connectors are secured to insulators.
- Each block includes a main lug and branch lugs.



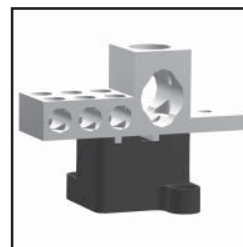
CSBL125B



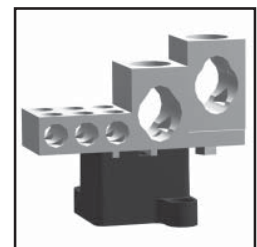
CSBL125T



CSBL225



CSBL400



CSBL600

Splitter Boxes

Part No.	Main Lug Ampacity	Max./Min. Wire Capacity	Branch Lugs Ampacity	Max./Min. Wire Capacity	Ship Wt lbs
CSBL125B	125	1/0 - 14	3/70	3 x (2-14)	1
CSBL125T	125	1/0 - 14	6/70	6 x (2-14)	1
CSBL225	225	300MCM - 6	6/125	6 x (2/0-14)	1
CSBL400	400	600MCM - 4 or 2 (x) 250 MCM - 1/0	6/200	6 x (3/0 - 14)	1
CSBL600	600	(2x) 600MCM - 4 or (4x) 250MCM - 1/0	6/200	6 x (3/0-14)	1

Technical references and CAD downloads available at www.hammondmfg.com

All dimensions in inches unless specified otherwise