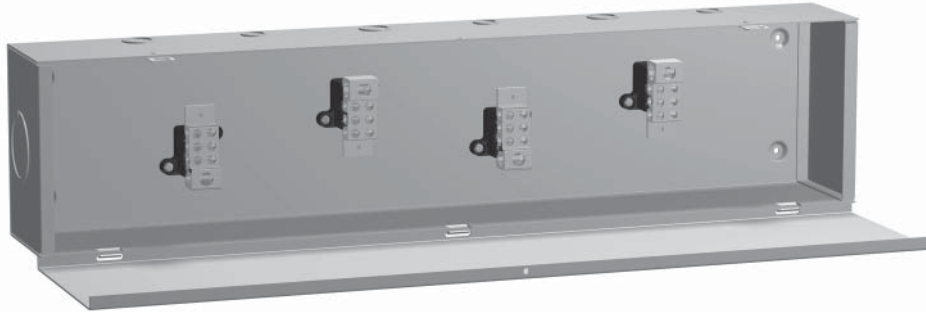


Splitter Troughs

NEMA 1


Commercial Enclosures

Application

- The splitter troughs are designed for distribution of up to 600 V (max) service using either 3 or 4 wires.

Standards

- CSA Certified
- **Complies with**
 - IEC 60529, IP20

Construction

- Formed and spot welded from 14 or 16 gauge steel.
- Factory installed splitter blocks.
- Series of knockouts on each side.
- Padlocking hasp.

Finish

- Cover and enclosure are finished in recoatable smooth ANSI 61 gray powder coating.

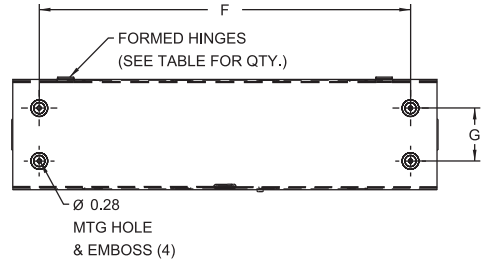
3 Wire	Part Number		CU/AL Amps	Dimensions			Ship Wt.lbs
	4 Wire	Less Blocks		H	W	D	
CST273	CST274	-	70/70	24	6	4	12
CST373	CST374	-	70/70	36	6	4	17
CST473	CST474	-	70/70	48	6	4	21
CST2103	CST2104	CST2100	125/120	24	6	4	12
CST3103	CST3104	CST3100	125/120	36	6	4	17
CST4103	CST4104	CST4100	125/120	48	6	4	21
CST6103*	CST6104*	CST6100	125/120	72	8	5	39
CST2203*	-	CST2200	225/225	24	8	5	16
CST3203*	CST3204*	CST3200*	225/225	36	8	5	22
CST4203*	CST4204*	CST4200*	225/225	48	8	5	27
CST5203*	CST5204*	CST5200*	225/225	60	8	5	33
CST6203*	CST6204*	-	225/225	72	8	5	39
CST3403*	-	CST3400*	400/340	36	10	6	35
CST4403*	CST4404*	CST4400*	400/340	48	10	6	45
CST5403*	CST5404*	CST5400*	400/340	60	10	6	58
CST6403*	CST6404*	CST6400*	400/340	72	10	6	62
CST4603*	CST4604*	-	600/574	48	10	6	45
CST5603*	CST5604*	-	600/574	60	10	6	58
CST6603*	CST6604*	-	600/574	72	10	6	62

* 14 gauge steel

Splitter Trough

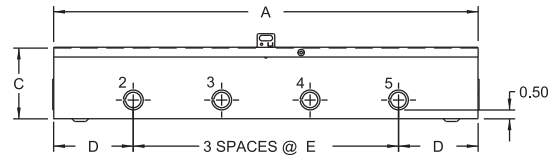
Splitter Troughs

NEMA 1

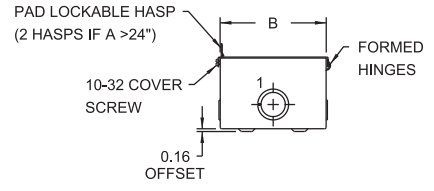


Top View

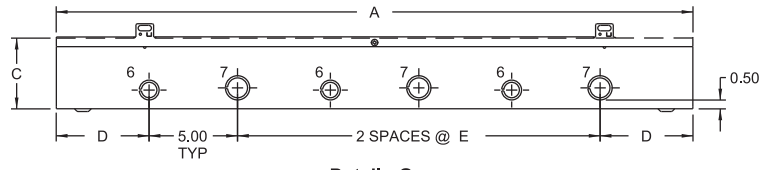
NOTE: KNOCKOUTS TYPICAL ON OPPOSITE SIDES



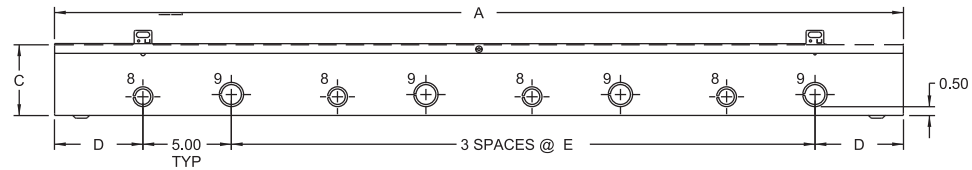
Detail - F



End View



Detail - G



Detail - H

3 Wire	Part Number		Optional Less Blocks Grounding Kit	CU/AL Amps	Dimensions							Conduit Size (Location)				
	4 Wire				A	B	C	D	E	F	G	Detail	1/2"-3/4"	3/4"-1"	1"-1 1/4"	2"-2 1/2"
CST273	CST274	-	CGK225	70/70	24	6	4	4.50	5.00	21.00	3.00	F	2,3,4,5	-	1	-
CST373	CST374	-	CGK225	70/70	36	6	4	7.50	7.00	33.00	3.00	F	2,3,4,5	-	1	-
CST473	CST474	-	CGK225	70/70	48	6	4	7.50	11.00	45.00	3.00	F	2,3,4,5	-	1	-
CST2103	CST2104	CST2100	CGK225	125/120	24	6	4	4.50	5.00	21.00	3.00	F	2,3,4,5	-	1	-
CST3103	CST3104	CST3100	CGK225	125/120	36	6	4	7.50	7.00	33.00	3.00	F	2,3,4,5	-	1	-
CST4103	CST4104	CST4100	CGK225	125/120	48	6	4	7.50	11.00	45.00	3.00	F	2,3,4,5	-	1	-
CST6103*	CST6104*	CST6100	CGK225	125/120	72	8	5	5.25	10.25	69.00	5.00	H	8	9	1	-
CST2203*	-	CST2200	CGK225	225/225	24	8	5	4.50	5.00	21.00	5.00	F	2,4	3,5	-	1
CST3203*	CST3204*	CST3200*	CGK225	225/225	36	8	5	5.25	10.25	33.00	5.00	G	6	7	-	1
CST4203*	CST4204*	CST4200*	CGK225	225/225	48	8	5	5.00	11.00	45.00	5.00	H	8	9	-	1
CST5203*	CST5204*	CST5200*	CGK225	225/225	60	8	5	5.00	15.00	57.00	5.00	H	8	9	-	1
CST6203*	CST6204*	-	CGK225	225/225	72	8	5	5.00	19.00	69.00	5.00	H	8	9	-	1
CST3403*	-	CST3400*	CGK400	400/340	36	10	6	5.25	10.25	33.00	7.00	G	6	7	-	-
CST4403*	CST4404*	CST4400*	CGK400	400/340	48	10	6	5.00	11.00	45.00	7.00	H	8	9	-	-
CST5403*	CST5404*	CST5400*	CGK400	400/340	60	10	6	5.00	15.00	57.00	7.00	H	8	9	-	-
CST6403*	CST6404*	CST6400*	CGK400	400/340	72	10	6	5.00	19.00	69.00	7.00	H	8	9	-	-
CST4603*	CST4604*	-	CGK400	600/574	48	10	6	5.00	11.00	45.00	7.00	H	8	9	-	-
CST5603*	CST5604*	-	CGK400	600/574	60	10	6	5.00	15.00	57.00	7.00	H	8	9	-	-
CST6603*	CST6604*	-	CGK400	600/574	72	10	6	5.00	19.00	69.00	7.00	H	8	9	-	-

* 14 gauge steel

Technical references and CAD downloads available at www.hammondmfg.com

All dimensions in inches unless specified otherwise

Quality Products. Service Excellence.

Commercial Enclosures

Splitter Trough